



---

# Youth Services Bureau of Monroe County

---



---

# A Bit of History

Since 1972, the Youth Services Bureau of Monroe County has provided services in an effort to:

- strengthen families
  - divert youth from the juvenile justice system
  - foster positive youth development
-

---

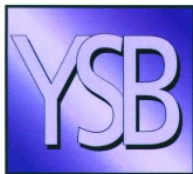
# **Our Mission Statement**

**to provide**

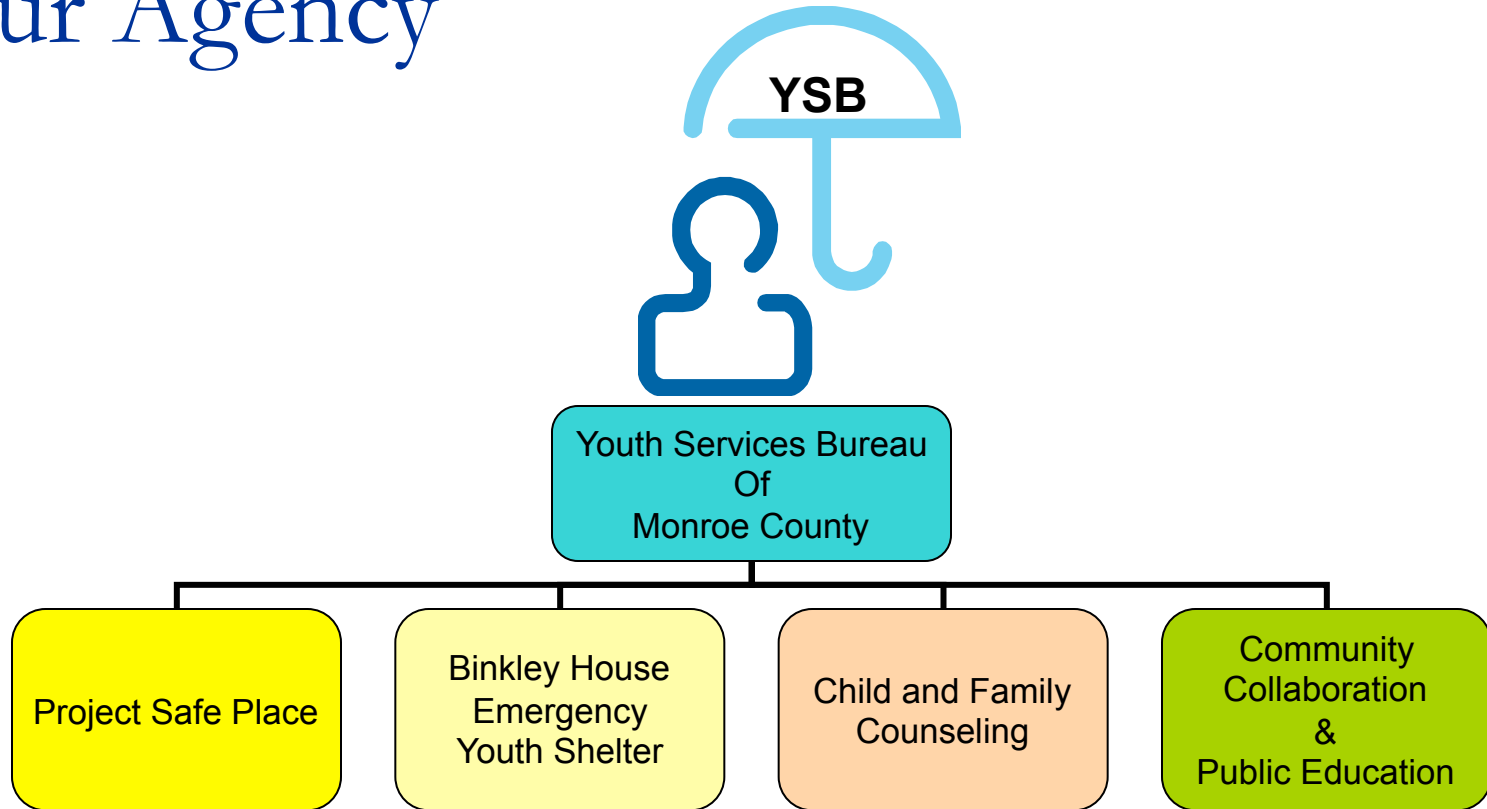
***services , programs, referrals & advocacy for youth***

**&**

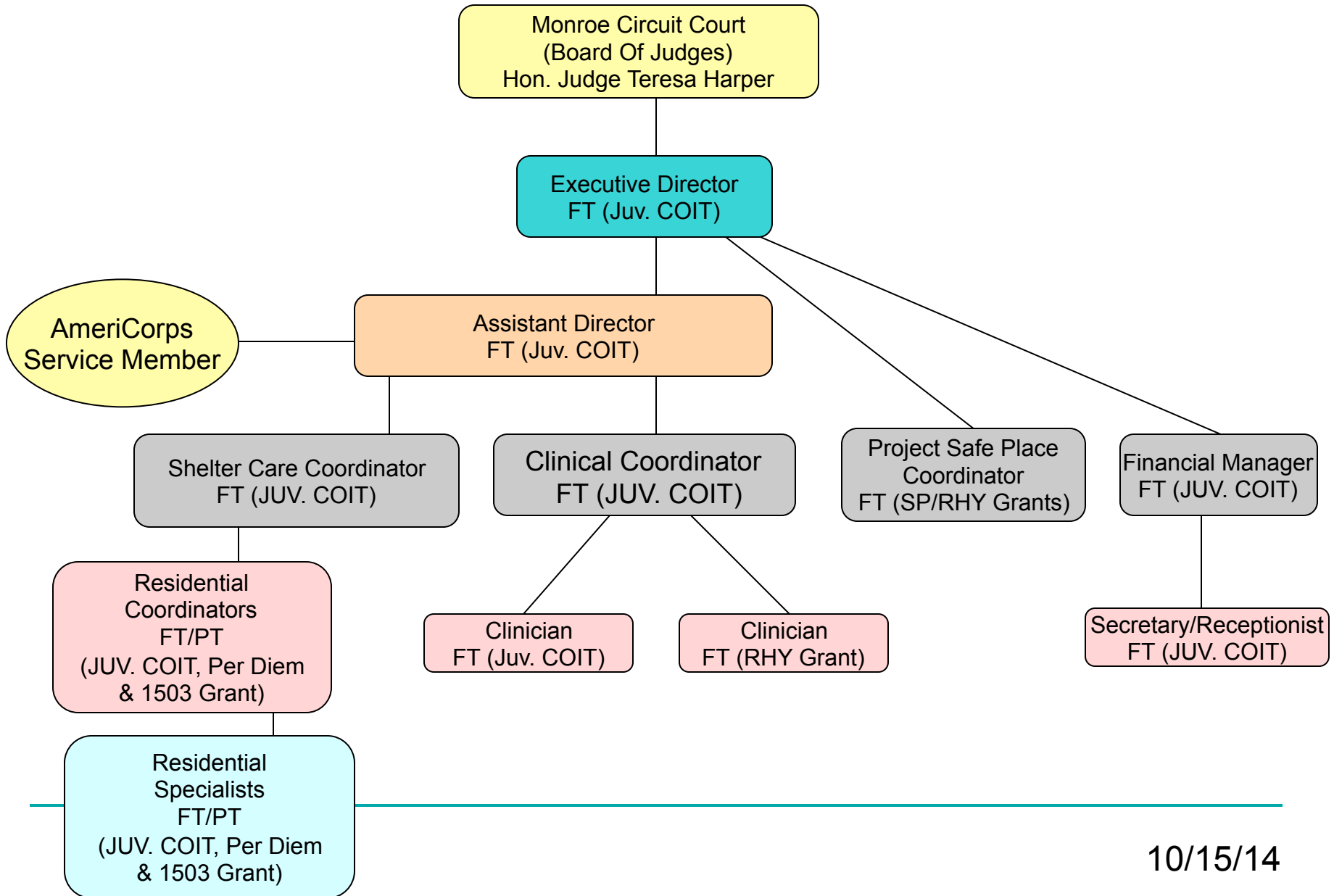
**community education on issues concerning youth**



# Our Agency



# Youth Services Bureau of Monroe County: Organizational Chart



---

# Accredited by Indiana Youth Services Association

## Four Core Roles

- **Delinquency Prevention** - programs aimed at preventing delinquent behavior by providing positive alternatives for keeping youth out of the justice system
  - **Advocacy** - activities that support, represent and protect the children and youth
  - **Community Education** - services that educate and raise communities' awareness about issues central to healthy youth development
  - **Information and Referral** - the sharing of information on and referral to a variety of youth serving agencies
-

---

# A.R.C. Philosophy

- **Attachment** – The capacity to form & maintain a healthy emotional bond with another person or persons which is a source of mutual comfort, safety and caring.
  - **Self-Regulation** – Developing & maintaining the ability to notice & control feelings such as frustration, anger & fear.
  - **Competency** – Mastering the developmental tasks of adolescence & developing the ability to plan and organize for the future.
-

---

# Trauma Informed Care

- Strength-based framework that is grounded in an understanding of & responsiveness to the impact of trauma
- Emphasizes physical, psychological & emotional safety for both providers & survivors
- Creates opportunities for survivors to rebuild a sense of control & empowerment



# Project Safe Place

---



812-349-2507

# What is Project Safe Place?



- National youth outreach program that is replicated in local communities
- Educates thousands of youth each year on how to seek help when in crisis & the dangers of running away
- The program partners with youth friendly community entities to provide safe places for youth to go in a crisis

---

# How does Safe Place work?



- Youth in crisis goes to a Safe Place location
  - Safe Place site employee contacts the Shelter to request a volunteer
  - Volunteer meets face to face with youth:
    1. Bring youth to the shelter for a safe place to stay and/or to meet with a counselor
    2. Wait with the youth at the Safe Place location while parents or guardian pick up youth
    3. Contact police &/or emergency medical services if needed
-

# Local Impact



- 89 physical and 46 mobile Safe Place sites
  - Educate youth through school & community presentations, awareness events & creative projects
    - 2,755 Adults Educated
    - 13,850 Youth Educated
  - Served 60 youth in 2013
-

---

# Binkley House Emergency Youth Shelter

---



---

# The Binkley House

- 24 hour Emergency Shelter
  - Males & females between the age of 8-17 years old
  - Licensed for 15 beds
    - 4 are reserved priority to runaway/homeless youth (non-agency)
  - Incentive Based Approach – hands off unless there is a dire safety issue
  - Emergency counseling available 24 hours a day
-

---

# Binkley House Emergency Youth Shelter

- ❑ Department of Child Services

- ❑ Residential Licensing – Emergency Shelter Care
- ❑ Contract Audit (Financial, Shelter, Clinical)

- ❑ Department of Health & Human Services

- ❑ Health Program

- ❑ Bureau of Child Care – Division of Child Care

- ❑ Nutrition and Food Services Program
- ❑ Health Program

- ❑ Indiana Department of Education

- Child Nutrition Program (National School Lunch Program)
-

---

# Evidence Based Practices & Outcomes in Shelter Care

- Evidence Based Practice
    - **Ansell E. Casey** - Independent Living Skills Assessment/Plan
  
  - Measured Outcomes - Prevention
  - Non-arrest during time of program
    - Non-arrest 6 months post service
    - Making progress towards achieved outcomes/goals
      - Increased knowledge
      - Increased skills
      - Academic success
    - Meets eligibility requirements
    - Completes sessions/tools of program
    - Client rates services as satisfactory or above on satisfaction survey
-



---

# Placements Available at Binkley House

## ■ Parental

- ❑ Youth is signed in by their legal guardian
- ❑ Youth must agree to placement (voluntary placement)
- ❑ Occurs at no cost to the family

## ■ Agency – Court Ordered

- ❑ Youth is court-ordered to be placed as an alternative to detention
- ❑ Allows the youth to
  - stay in the community and keep connected with family
  - continue their education
  - Participate in community programs/treatment
- ❑ Subsidized by the Department of Child Services (Per Diem funding)

---

Length of stay must not exceed 21 days.

---

## ■ Agency - Department of Child Services

- ❑ Youth may be placed by DCS if their home is deemed unsafe or if there is an investigation of abuse and/or neglect
- ❑ Placements may also occur in order for a youth to transition into or between foster home
- ❑ Youth is a ward of the state
- ❑ Subsidized by the Department of Child Services (Per Diem funding)

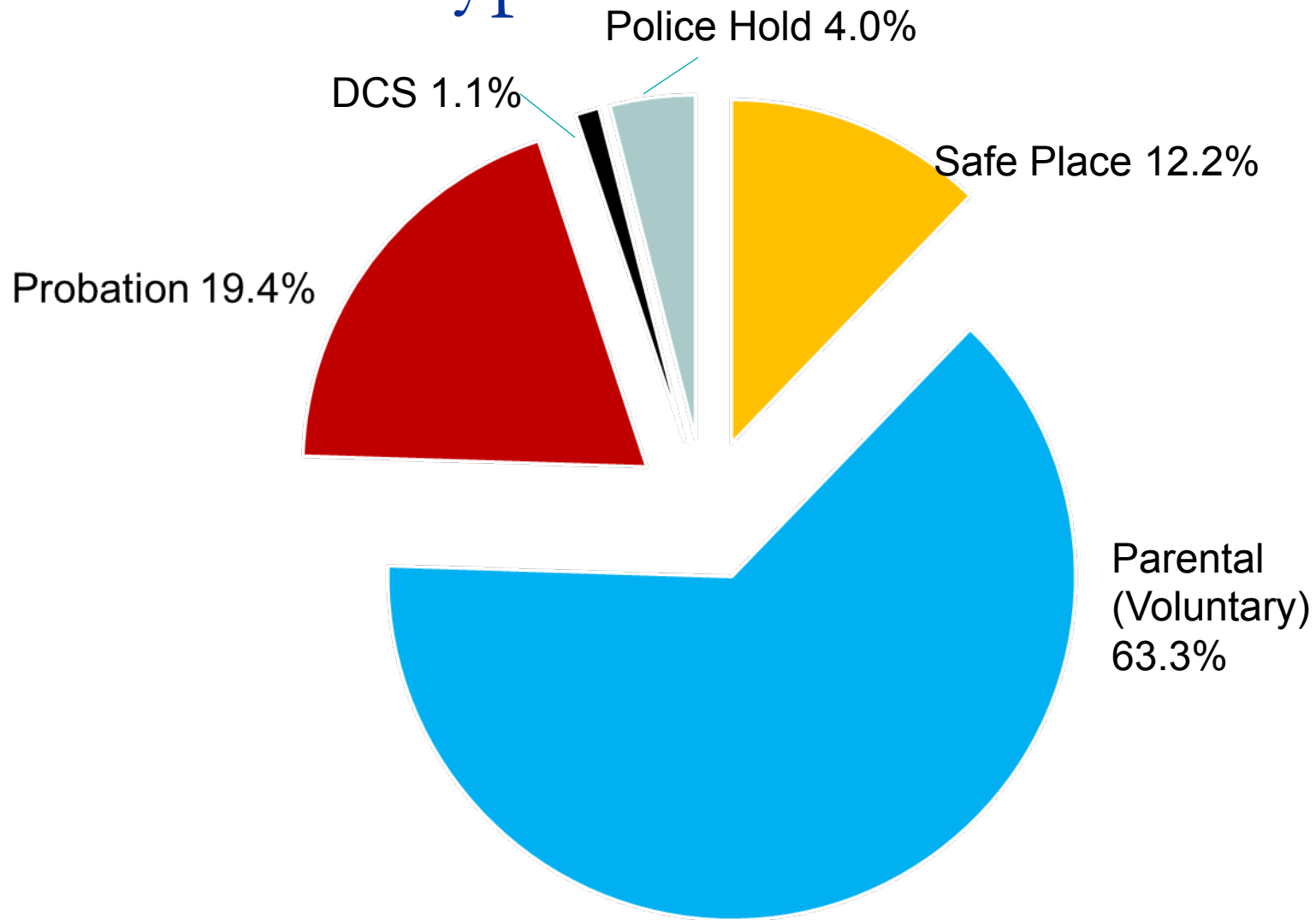
## ■ Safe Place

- ❑ Youth may choose to place themselves at Binkley House
- ❑ Maximum length of this placement type is 72 hours
- ❑ Often transitions into another type of placement, if extended services are needed

## ■ Police Holds

- ❑ Utilized when a youth's legal guardian cannot be reached or care for youth is needed until their legal guardian can take physical custody of the youth
  - ❑ Allows local law enforcement to return to primary job duties
-

# Placement Type



# “5 Finger Agreement”

- Pinky Finger – Safety
- Ring Finger – Commitment & Responsibility
- Middle Finger – Respect
- Pointer Finger – Follow Directions
- Thumb Finger – Try Your Best



# Shelter Daytime Schedule (snapshot)

<b>MONDAY</b>	<b>TUESDAY</b>
<b>7:45 am- 9:00 am</b> Physical Activity (9:00-9:30 Transition Time)	<b>7:45 am - 9:00 am</b> Physical Activity (9:00-9:30 Transition Time)
<b>9:30 am -11:00 am</b> A.Ivy Tech B.IU Green House C.Global Gifts	<b>9:30 am- 10:30 am</b> Hoosier Hills Food Bank Volunteering
<b>11:15 am - 12:30 pm</b> Lunch and Chores (Focus on Daily Living)	<b>10:30 am - 11:00 am</b> Transition Time
<b>12:30 pm -1:30 pm</b> Domain Specific Board Games	<b>11:30 am - 12:30 pm</b> Lunch and Chores (Focus on Daily Living)
<b>1:30 pm - 2:30 pm</b> Educational videos, reading, Ansell-Casey testing, homework	<b>12:30 pm - 1:30 pm</b> Independent Skill Building Time
	<b>1:30 pm - 2:30 pm</b> Educational videos, reading, Ansell-Casey testing, homework

Domains: Daily Living, Communication, Housing & Money, Work /Study Life, Career Education Planning, Social Relationships

---

# Programming

## Focus Group 5 days a week

- Social Life Skills
  - Teen Parent Prevention
  - Anger Management
  - Conflict Resolution
  - Parenting Skills
  - Substance Abuse Education
  - Relationships
  - Responsible Sexuality
  - Self-Esteem Enhancement
  - Sexual Abuse Info
  - Artistic Expression
  - Self Development
-

---

# Top Truths of Binkley House Youth Shelter

The Youth Shelter is **NOT** a

- ❑ “Kiddy jail” or “scared straight” program
- ❑ Punitive place
- ❑ Substitute for baby-sitting services
- ❑ Mental health or drug treatment facility

Voluntary placement does **NOT** give youth a juvenile record.

Parental participation **IS** required.

Youth are provided Youth Development opportunities.

---

---

# The Numbers

- Average **over 600 inquires** for service each year
    - **1 in every 4 calls is related to runaway youth issues**
    - **Each inquiry is provided referral**, even if Binkley House may not be an option
  - Of those 600 inquiries
    - **250+** result in shelter services being provided
      - 92 Runaway & 34 Homeless** Youth Served
  - Median age group: **14 – 17 yrs. old**
  - Average daily population: **8 youth**
  - Average length of stay: **17 days**
  - Historically **74%** of our clients have **never** been to Binkley House for prior services
-



---

# Child & Family Counseling



---

Crisis Counseling – 24/7

Home-based Counseling

---

# Child & Family Counseling

- Family & individual crisis counseling for
    - Shelter youth
    - Non-shelter youth home-based services
  - For Home-based crisis counseling:
    - Serve youth ages 8-22
    - Number of sessions per individual & family may vary depending on need
    - Youth does not have to be a prior shelter resident
  - Counselors advocate for youth & families (for youth's best interest)
    - Court
    - Probation meetings
    - School conferences
    - Dept. of Child Svc. family team meetings
  - Referrals primarily come from parents, school social workers & probation officers
-

---

# Community Education & Outreach

- 
- School Collaboration on Bullying
  - Project Safe Place Outreach
  - Asset Building Coalition Involvement
  - Partnering on Trainings
  - Speaking at Local Meetings

---

# Partnerships/Collaborations

Bloomington Arts for All

Global Gifts

Hoosier Hills Food Bank

Indiana University MFA Program

Ivy Tech Community College

Meadows Hospital

Middleway House

Monroe County CASA

Monroe County Department of Child Services

Monroe County Juvenile Probation

Mother Hubbard's Cupboard

Planned Parenthood

Stepping Stones, Inc.

Volunteer Network

YMCA of Monroe County

---

# Funding Sources

Source		% of Total Income
Juvenile COIT	County	71.9%
Per Diems	State Reimbursement	12.1%
Runaway & Homeless Youth Grant (9/29/12 - 9/30/15)	Federal Reimbursement	10.7%
YSB 1503 Grant (7/01/13-6/30/14)	State Reimbursement	4%
Safe Place Grant (7/1/03-6/30/14)	State Reimbursement	0.9%
Federal Lunch Money YTD (7/1/13-6/30/14)	Federal Reimbursement (through state DOE)	0.3%
Donations	Private	0.1%
<b>TOTAL</b>		<b>100%</b>